

# GAS POWER SOLUTION

POWER SOLUTION  
FOR YOU BETTER TOMORROW



DESCRIPTIONS AND SPECIFICATION ARE SUBSTANTIALLY CORRECT AT TIME OF PRINTING AND SUBJECT TO CHANGE WITHOUT NOTICE.



UK / CHINA  
TIDE POWER TECHNOLOGY CO., LIMITED





# INDEX

Market Segments	03
Tide Power New Energy In the World	05
Energy Project Type	07
Advantages of Tide Power	09
Tide Power New Energy Product	11
Product Parameter	15
Cases of Tide Power	19
Tide Power CHP/CCHP Turnkey System	29

Incorporated in 2006 in Hong Kong, Tide Power is a professional energy solutions provider mainly engaged in genset assembly, research and development for clean energy. Our products cover the rated range from 6–5625kVA and are widely used in various industries. With over 20000m<sup>2</sup> of factories site in China and the UK and an annual production capacity of over 3000 units, our products export to over 80 countries and regions worldwide.

Our focus lies in our insatiable effort and professional know how in the capability of meeting the highest standard of the business practice which by all means surpasses the demand for all application and the requirement. Given our thought in providing perfect configuration to meet the demand and need, Tide Power has always been recognized and considered as the leading provider in the industry.

No doubt that the rated ranges offered whether in diesel or gas power can be satisfied and easily fit into most needs not to mention with our prompt and efficient delivery. This of course will at all time assure our working partner the guaranteed power with our round the clock services.

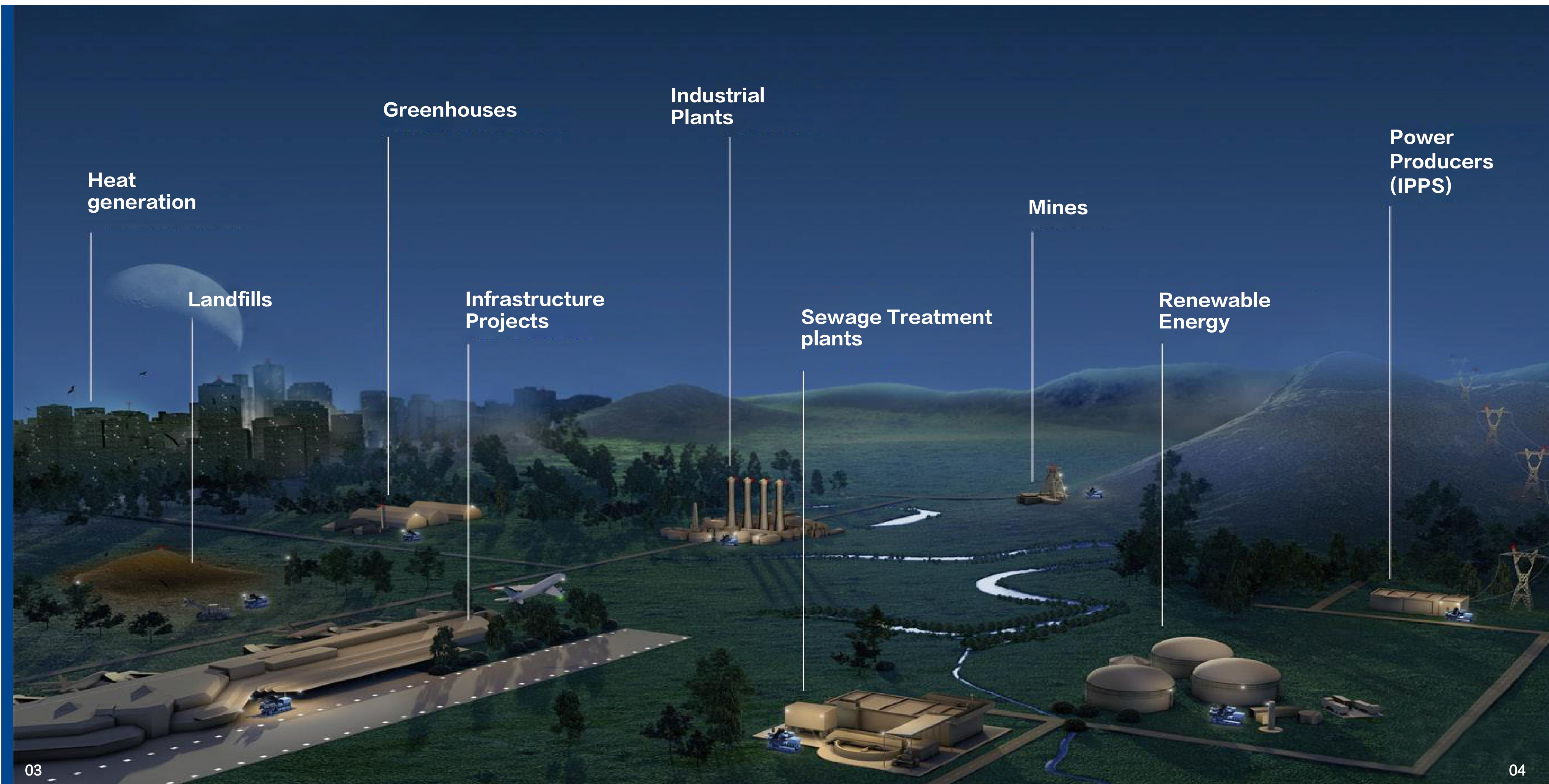




# MARKET SEGMENTS

OUR SERVICE, YOUR CHOICE

Tide Power is one of the very few authorised OEM partners of MWM worldwide and is able to customise a complete range of gas-fired generator sets to meet the diverse needs of customers and to suit different application scenarios for power generation projects in the natural gas and biogas sectors.





# TIDE POWER NEW ENERGY IN THE WORLD

PROFESSIONAL POWER SOLUTION PROVIDER



UK/CHINA FACTORIES  
**20000+m<sup>2</sup>**

ANNUAL OUTPUT  
**3000+ UNITS**

EMPLOYEE  
FULL TIME STAFFS  
**200+**

SERVING COUNTRIES  
AND REGIONS  
**80+**

Provide global client with Customized Distributed Energy Solution, Pre-sales Analysis, After-sales Service Training, Renewable Energy Investment Budget Analysis, One-stop Turnkey Engineering Project.





**EP:**  
ENGINEERING & PROCUREMENT



**O&M:**  
OPERATION & MAINTENANCE



**IPP:**  
INDEPENDENT POWER PRODUCER



**BOT:**  
BUILD & OPERATION & TRANSFER



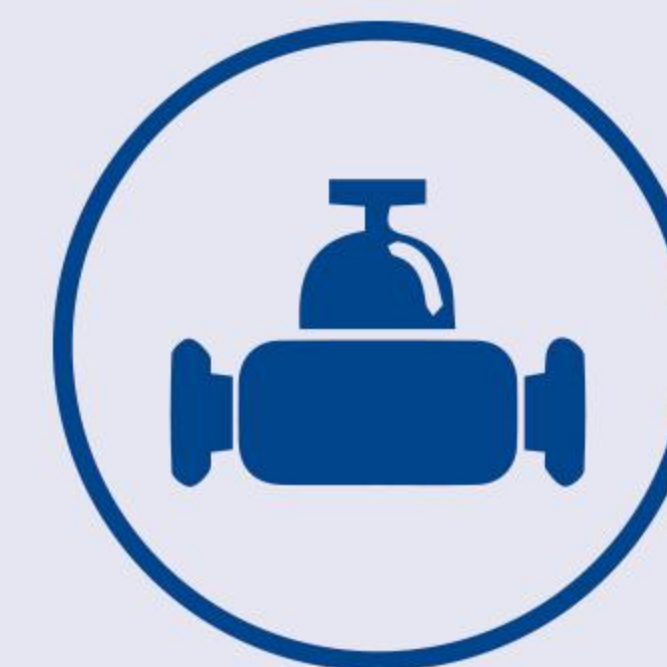
**EPC+F:**  
ENGINEERING & PROCUREMENT &  
CONSTRUCTION + FINANCING



**EPC:**  
ENGINEERING & PROCUREMENT  
& CONSTRUCTION



**PPP:**  
PUBLIC & PRIVATE  
& PARTNERSHIP



**EMC:**  
ENERGY & MANAGEMENT  
& CONTRACTING

# ENERGY PROJECT TYPE

## INVESTMENT SUPPORT

Tide Power provides customers with a diverse range of cooperation models and financial support categories to help achieve maximum efficiency.







# OUR MAJOR ADVANTAGE

## PRODUCT ADVANTAGES

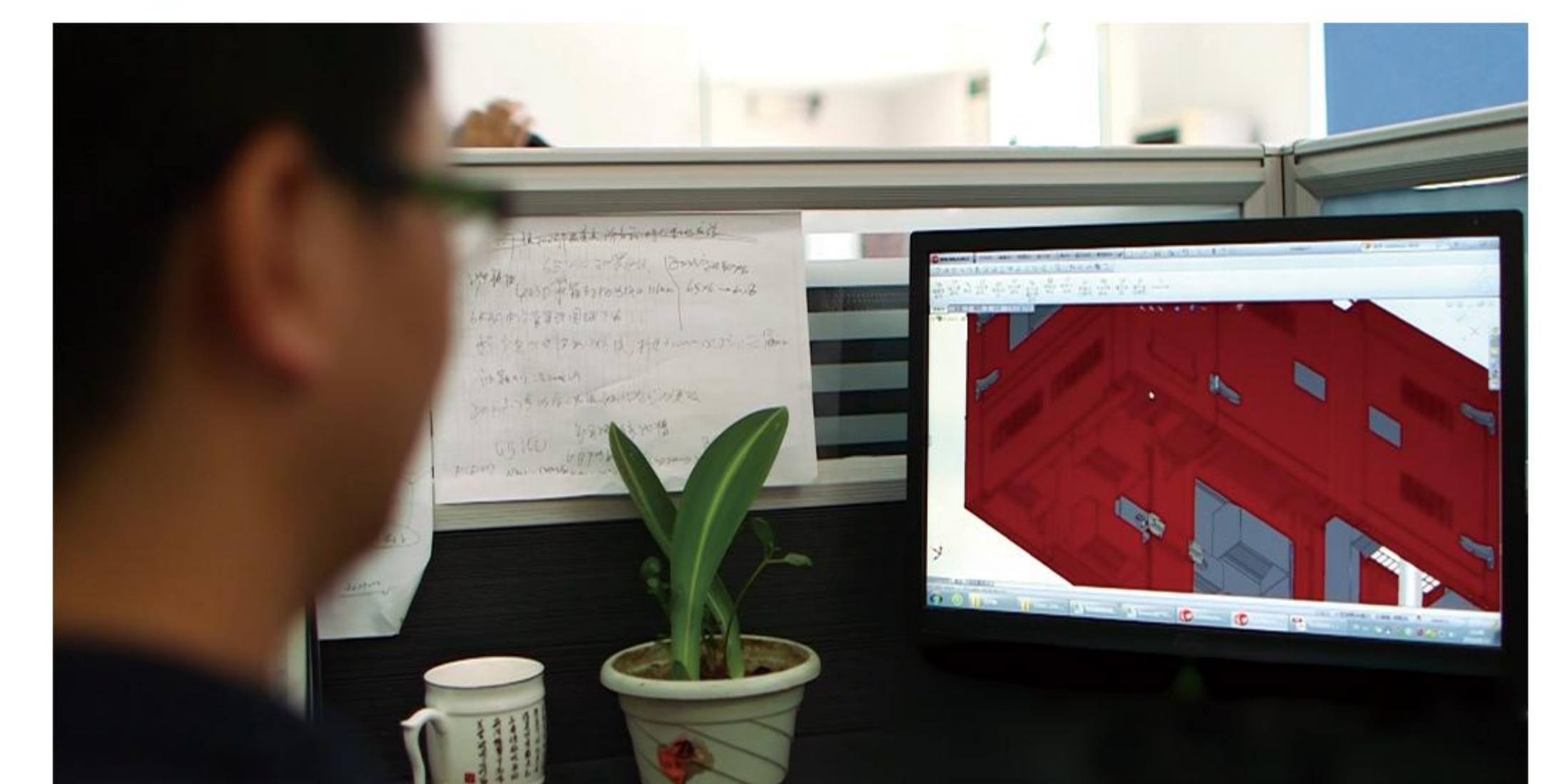
Our professional R&D Team with years of experience in genset manufacturing not only can provide you with fully automatic generator set but also with low noise level and automatic switching gensets

## SERVICE ADVANTAGES

Global distribution network can always provide products and services quickly and promptly without any interruption of the need

## TECHNICAL ADVANTAGES

Have a team of professional personnel to provide multi-mode business cooperation and analysis







## INTRODUCTION

Tide Power is a global leader in the field of gas generating sets and CHP systems. We are one of the few gas generating set manufacturers in the world dedicated to the development of various special applications. We have integrated various resources and entered into a strategic OEM cooperation with MWM, the world's advanced high efficiency gas engine and generator set production brand, to promote the application of green energy in the power sector.

## GAS CLASSIFICATION

We make full use of various resources to offer a complete set of clean energy solutions, so as to maximize the benefits of each customer reflect. Tide Power gas generator sets provide range from 7kW to 4.5MW, which can be used as:

Natural Gas

Biogas

Landfill Gas

Coal Mine Gas

Petroleum Associated Gas

Shale Gas

Syngas

Methane Gas

Sewage Biogas

## DISTRIBUTED ENERGY SOLUTION

- 1 ) Animal Husbandry / Animal Breeding Solutions
- 2 ) Agriculture / Agricultural Straw / Waste Treatment Landfill Solutions
- 3 ) Landfill Solutions
- 4 ) Petroleum Associated Gas Solutions
- 5 ) Organic Wastewater Solutions







## APPLICATION

- Coal Mine Gas, Natural Gas;
- Animal Husbandry, Animal Breeding;
- Agriculture, Agricultural Straw, Waste Treatment Landfill;
- Waste Landfill, Meal Waste, Greenhouse, Organic Wastewater, Food Manufacturing, Industry, Wine Industry, Paper industry;
- ...



# ADVANTAGES AND FEATURES

GENERATOR POWER:  
**7kW–4.5MW**

ENGINE BRAND:  
**MWM  
TIDE POWER**

## HUMANIZED DESIGN

- LCD Intelligent Control System
- Remote Monitoring and Communicate Interface
- Customized Low Noise Canopy to guarantee the products can be used in Residential Areas
- Modular Design for Electricity, Heat and Cooling for easy Maintenance

## HIGH EFFICIENCY

- Heat Recovery
- Exhaust Recovery
- Cogeneration, Energy Utilization can reach  $\geq 85\%$

## HIGH RELIABILITY

- Guarantee Continuous Running for 6,000–8,000 Hours/Year
- All kinds of Wearing parts and Spare parts are always available to escort 24 hours non-stop Power Generation
- Global Service Network

## HIGH DURABILITY

- Coupling Joint
- Automatic Oil Refilling
- High Strength Skid Base & Canopy
- High Performance Vibration Absorbing Rubber
- Stainless Steel Pipeline
- Oil & Gas Filter System

## HIGH SECURITY

- Gas Leak Protection Device
- Lightning Protection
- Smoke Alarm System
- Reliable Gas Train
- Cylinder Temperature Protection System
- Explosion Proof Control System



POWERED BY <b>MWM</b> / 50HZ							NATURAL GAS	
Genset Model	Engine Model	Output Power kW/kVA	Cylinder No.& Arrangement	Displacement Litres	Oil Consumption g/kWh	Gas Consumption m³/h		
TM600G	TCG3016V12	600/600	12-V Type	26.3	0.1	0.25		
TM800G	TCG3016V16	800/800	16-V Type	35	0.1	0.25		
TM1000G	TCG3016V16S	1000/1000	16-V Type	35	0.1	0.26		
TM1380G	TCG3020V12	1380/1380	12-V Type	53	0.15	0.24		
TM1840G	TCG3020V16	1840/1840	16-V Type	71	0.15	0.24		
TM2300G	TCG3020V20	2300/2300	20-V Type	89	0.15	0.24		
TM4500G-HV	TCG2032V16	4500/4500	16-V Type	272	0.3	0.24		

POWERED BY <b>MWM</b> / 60HZ							NATURAL GAS	
TM580XG	TCG3016V12	580/580	12-V Type	26	0.1	0.25		
TM775XG	TCG3016V16	775/775	16-V Type	35	0.1	0.25		
TM970XG	TCG3016V16S	970/970	16-V Type	35	0.1	0.26		

POWERED BY <b>MWM</b> / 50HZ							BIOGAS	
Genset Model	Engine Model	Output Power kW/kVA	Cylinder No.& Arrangement	Displacement Litres	Oil Consumption g/kWh	Gas Consumption m³/h		
TM600BG	TCG3016V12	600/600	12-V Type	26.3	0.1	0.25		
TM800BG	TCG3016V16	800/800	16-V Type	35	0.1	0.25		
TM1380BG	TCG3020V12	1380/1380	12-V Type	53	0.15	0.24		
TM1840BG	TCG3020V16	1840/1840	16-V Type	71	0.15	0.24		
TM2300BG	TCG3020V20	2300/2300	20-V Type	89	0.15	0.24		

POWERED BY <b>MWM</b> / 60HZ							BIOGAS	
TM580XBG	TCG3016V12	580/580	12-V Type	26	0.1	0.25		
TM775XBG	TCG3016V16	775/775	16-V Type	35	0.1	0.25		

# PRODUCT PARAMETER



TIDE POWER / 50HZ							LPG	
Genset Model	Engine Model	Output Power kW/kVA	Cylinder No.&Arrangement	Displacement Litres	Oil Consumption g/kWh	Gas Consumption m³/h		
TCM38LPG	CG4L-4LPG	30/38	4In-Line	3.9	≤0.4	≤233		
TCM88LPG	CG6L-6LPG	70/88	6In-Line	5.9	≤0.4	≤203		
TCM113LPG	CG6L-8LPG	90/113	6In-Line	8.3	≤0.4	≤202		
TCM125LPG	CG6L-9LPG	100/125	6In-Line	9.5	≤0.4	≤205		
TEA188LPG	EG6L-10LPG	150/188	6In-Line	10	≤0.6	≤205		
TEA350LPG	EG6L-20LPG	280/350	6In-Line	20	≤0.6	≤227		

TIDE POWER / 60HZ							LPG	
Genset Model	Engine Model	Output Power kW/kVA	Cylinder No.&Arrangement	Displacement Litres	Oil Consumption g/kWh	Gas Consumption m³/h		
TCM38XLPG	CG4L-4LPG	30/38	4In-Line	3.9	≤0.4	≤233		
TCM88XLPG	CG6L-6LPG	70/88	6In-Line	5.9	≤0.4	≤203		
TCM113XLPG	CG6L-8LPG	90/113	6In-Line	8.3	≤0.4	≤202		
TCM125XLPG	CG6L-9LPG	100/125	6In-Line	9.5	≤0.6	≤205		
TEA188XLPG	EG6L-10LPG	150/188	6In-Line	10	≤0.6	≤205		
TEA350XLPG	EG6L-20LPG	280/350	6In-Line	20	≤0.6	≤227		



TIDE Power / 50HZNATURAL GAS						
Genset Model	Engine Model	Output Power kW/kVA	Cylinder No.&Arrangement	Displacement Litres	Oil Consumption g/kWh	Gas Consumption m³/h
TEA31G	EG4L-3G	25/31	4In-Line	2.8	≤0.4	9 @33.7MJ/m³
TCM75G	CG4L-4G	60/75	4In-Line	3.9	≤0.4	19 @33.7MJ/m³
TCM113G	CG6L-6G1	90/113	6In-Line	5.9	≤0.4	28.3 @33.7MJ/m³
TCM125G	CG6L-6G2	100/125	6In-Line	5.9	≤0.4	33.6 @33.7MJ/m³
TCM163G	CG6L-8G1	130/163	6In-Line	8.3	≤0.4	42.5 @33.7MJ/m³
TCM188G	CG6L-8G2	150/188	6In-Line	8.3	≤0.4	48 @33.7MJ/m³
TCM225G	CG6L-9G1	188/225	6In-Line	8.9	≤0.4	56 @33.7MJ/m³
TCM250G	CG6L-9G2	200/250	6In-Line	8.9	≤0.4	62 @33.7MJ/m³
TCM275G	CG6L-10G1	220/275	6In-Line	9.5	≤0.6	68 @33.7MJ/m³
TEA325G	EG6L-13G1	260/325	6In-Line	13	≤0.6	78.4 @33.7MJ/m³
TCM375G	CG6L-15G1	300/375	6In-Line	15	≤0.6	93 @33.7MJ/m³
TCM438G	CG6L-15G2	350/438	6In-Line	15	≤0.6	108 @33.7MJ/m³
TCM625G	CG12V-38G	500/625	12V-Type	38	≤0.6	158.7 @33.7MJ/m³

TIDE Power / 50HZBIOGAS						
Genset Model	Engine Model	Output Power kW/kVA	Cylinder No.&Arrangement	Displacement Litres	Oil Consumption g/kWh	Gas Consumption m³/h
TCM50BG	CG4L-4BG	40/50	4In-Line	3.9	≤0.4	13 @33.7MJ/m³
TCM75BG	CG6L-6BG	60/75	6In-Line	5.9	≤0.4	19.8 @33.7MJ/m³
TCM125BG	CG6L-8BG1	100/125	6In-Line	8.3	≤0.4	33 @33.7MJ/m³
TCM150BG	CG6L-8BG2	120/150	6In-Line	8.3	≤0.4	38.4 @33.7MJ/m³
TCM175BG	CG6L-9BG	140/175	6In-Line	8.9	≤0.4	46.2 @33.7MJ/m³
TCM200BG	CG6L-10BG	160/200	6In-Line	9.5	≤0.6	52.8 @33.7MJ/m³
TEA250BG	EG6L-13BG1	200/250	6In-Line	13	≤0.6	64 @33.7MJ/m³
TCM500BG	CG12V-38BG	400/500	12V-Type	38	≤0.6	132 @33.7MJ/m³

TIDE Power / 60HZNATURAL GAS						
Genset Model	Engine Model	Output Power kW/kVA	Cylinder No.&Arrangement	Displacement Litres	Oil Consumption g/kWh	Gas Consumption m³/h
TEA31XG	EG4L-3G	25/31	4In-Line	2.8	≤0.4	19.8 @33.7MJ/m³
TCM75G	CG4L-4G	60/75	4In-Line	3.9	≤0.4	20 @33.7MJ/m³
TCM113XG	CG6L-6G1	90/113	6In-Line	5.9	≤0.4	30 @33.7MJ/m³
TCM163G	CG6L-8G1	130/163	6In-Line	8.3	≤0.4	45 @33.7MJ/m³
TCM188XG	CG6L-8G2	150/188	6In-Line	8.3	≤0.4	50 @33.7MJ/m³
TCM225XG	CG6L-9G1	188/225	6In-Line	8.9	≤0.4	58 @33.7MJ/m³
TCM250XG	CG6L-9G2	200/250	6In-Line	8.9	≤0.4	65 @33.7MJ/m³
TCM275XG	CG6L-10G1	220/275	6In-Line	9.5	≤0.6	71 @33.7MJ/m³
TEA350XG	EG6L-13G1	280/350	6In-Line	13	≤0.6	84 @33.7MJ/m³
TCM375XG	CG6L-15G1	300/375	6In-Line	15	≤0.6	93 @33.7MJ/m³
TCM438XG	CG6L-15G2	350/438	6In-Line	15	≤0.6	108 @33.7MJ/m³
TCM625G	CG12V-38G	500/625	12V-Type	38	≤0.6	161 @33.7MJ/m³

TIDE Power / 60HZBIOGAS						
Genset Model	Engine Model	Output Power kW/kVA	Cylinder No.&Arrangement	Displacement Litres	Oil Consumption g/kWh	Gas Consumption m³/h
TCM50XBG	CG4L-4BG	40/50	4In-Line	3.9	≤0.4	13 @33.7MJ/m³
TCM75XBG	CG6L-6BG	60/75	6In-Line	5.9	≤0.4	19.8 @33.7MJ/m³
TCM125XBG	CG6L-8BG1	100/125	6In-Line	8.3	≤0.4	33 @33.7MJ/m³
TCM150XBG	CG6L-8BG2	120/150	6In-Line	8.3	≤0.4	38.4 @33.7MJ/m³
TCM175XBG	CG6L-9BG	140/175	6In-Line	8.9	≤0.4	46.2 @33.7MJ/m³
TCM200XBG	CG6L-10BG	160/200	6In-Line	9.5	≤0.6	52.8 @33.7MJ/m³
TEA250XBG	EG6L-13BG1	200/250	6In-Line	13	≤0.6	64 @33.7MJ/m³
TCM500XBG	CG12V-38BG	400/500	12V-Type	38	≤0.6	132 @33.7MJ/m³





# BIOGAS POWER PLANT BOT PROJECT

With our years of experience, we are able to offer a tailor-made design to meet your requirements.

Tide Power primes ourselves in developing into new area of green energy. As a gas generator provider, we could involve with local partners with both the generator sets as well as financial support. We always do our best for both current and future projects.



Location	Malaysia	Power Rating	1MW
Time	Sept, 2017	Fuel	Biogas

16 years Biogas ( Palm Oil ) Power Plant Project, known as a palm oil effluent is one of the energy source, which is used for electricity generation. Tide Power makes the best proposal for the mill in providing renewable energy. It saves the fuel costs and also increases revenues by selling the electricity to the grid.



# NATURAL GENERATOR GAS

We are proud to provide the high efficient technology to satisfy the needs of our customers with the optimum solutions, always trying to get to excellence.

Past experience allows us in providing all projects with economic benefits and optimizing the use of energy.

Location	Power Rating	Time	Fuel
Indonesia	2MW*2	Nov, 2016	Natural Gas



Fuelled by natural gas, the 4MW plant generates electricity and heat, making the best possible use of the energy from CHP. With well proven CHP technology, it contributes to the financial and carbon savings through its high efficient use of energy, which provides a good return on investment.



# PERKINS GAS GENERATOR WITH CHP SYSTEM

For commissioning or maintenance, our professional service engineers are ready to give you the help you need.

Our customers will benefit from the optimum heat recovery employing the CHP system. The heat arising during the production of electricity does not simply escape unused into the atmosphere, but is put to practical use, which makes the technology of cogeneration so efficient and climate-friendly.

Location

Russia

Power Rating

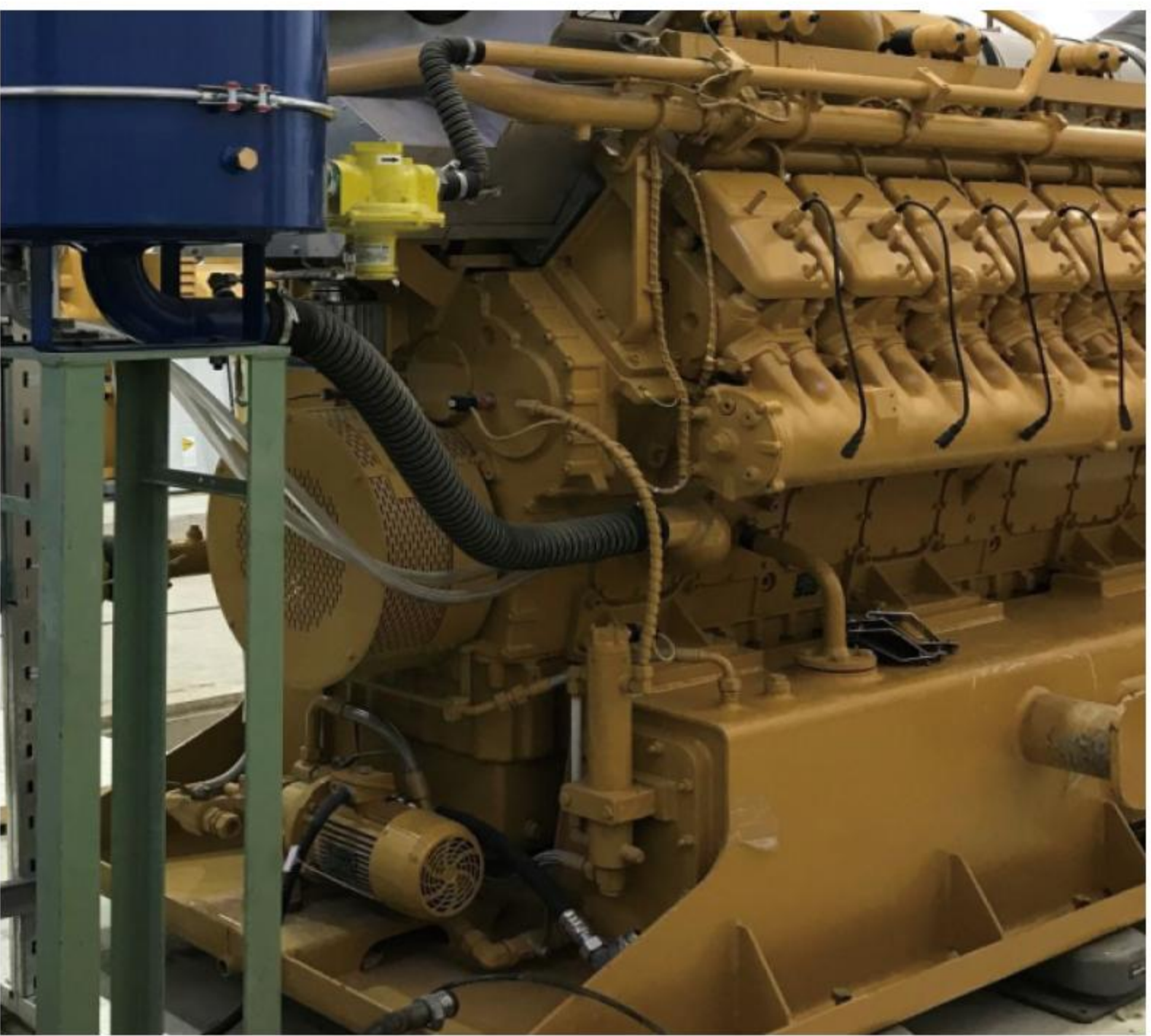
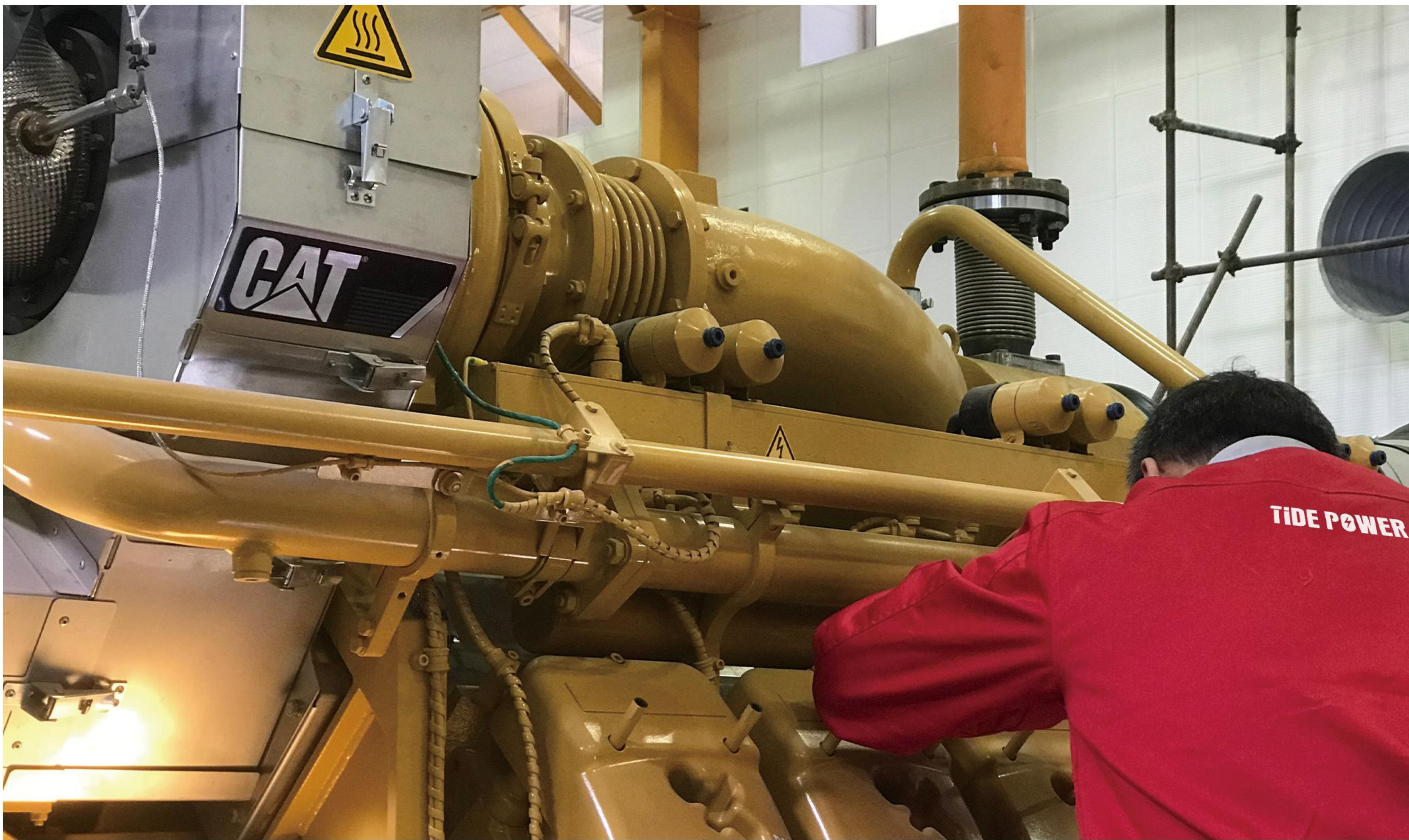
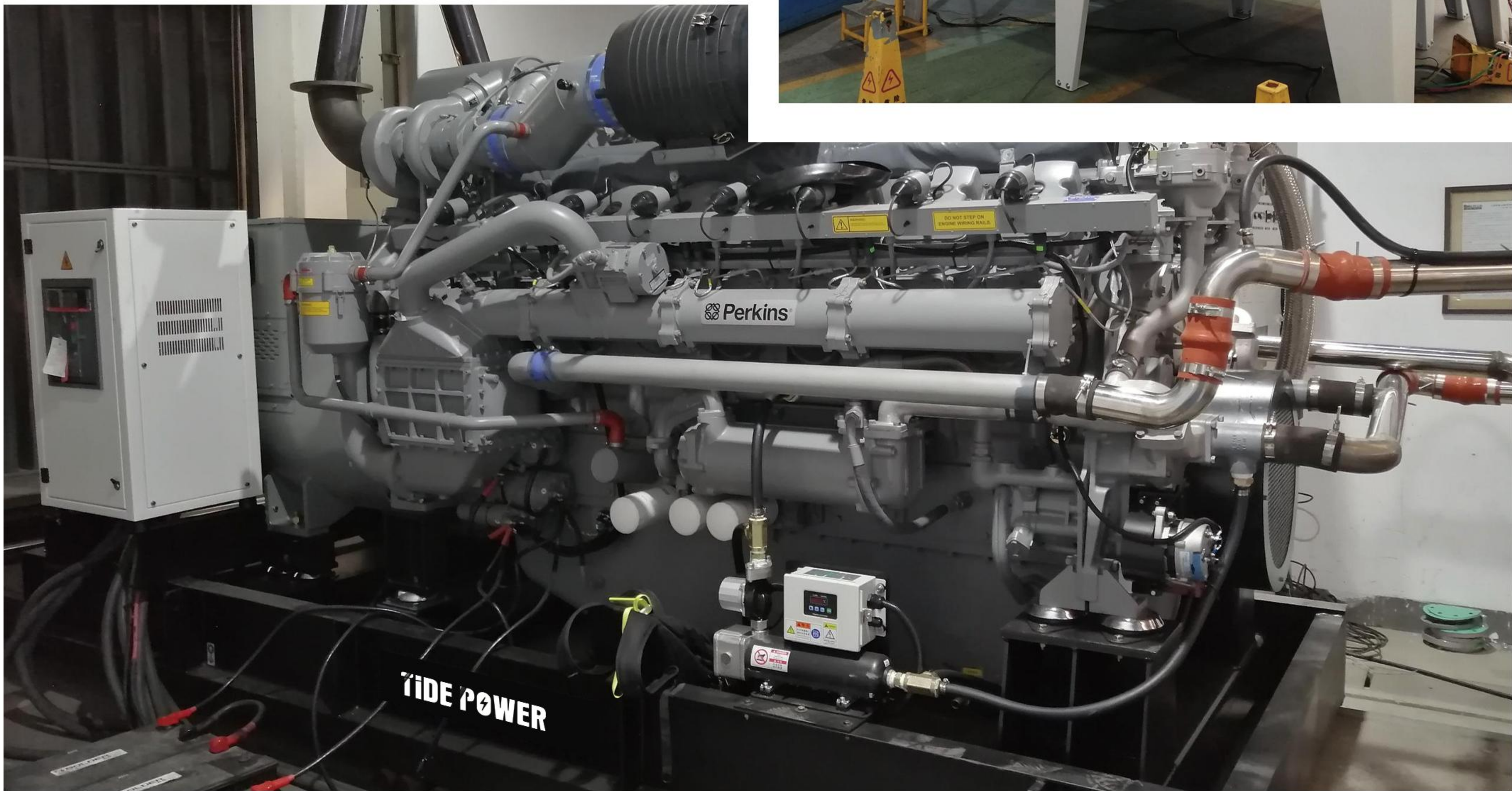
1000kW\*1

Time

2020

Fuel

Natural Gas



Location

South America

Power Rating

2MW\*2

Time

June, 2018

Fuel

Natural Gas

# PAPER MAKING FACTORY WITH POWER STATION

It is used in Paper Making Equipment Factory, which using 2 units of CG170-20. Each unit capacity is 2MW and total is 4MW to supply power to equipment. Signed contract in 2016 and completed commissioning in June 2018. So far, the gensets have been stably running with no any abnormal situation.





POWER STATION

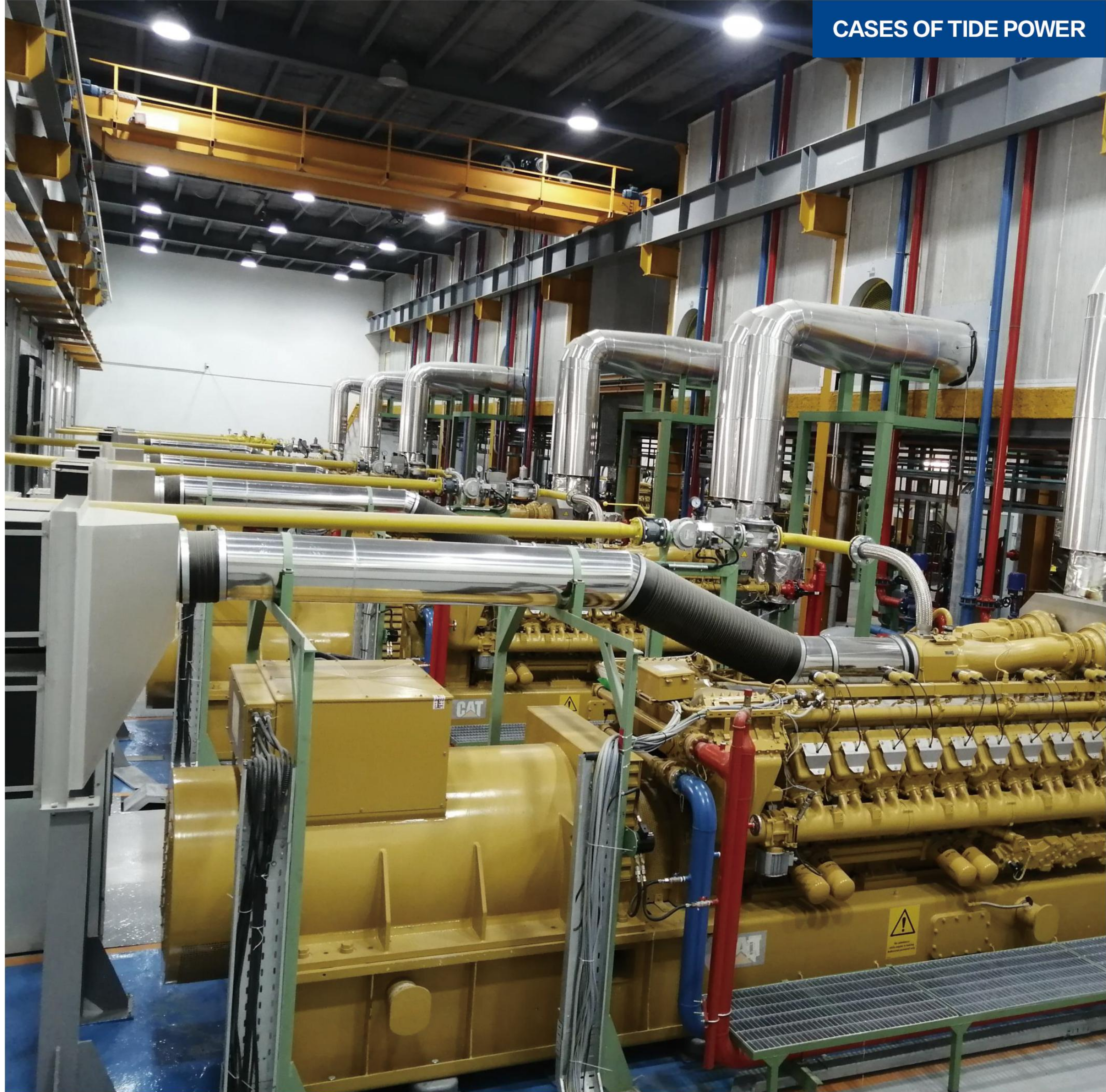
It is used in Power Station, which using 2 units of 2MW CG170-20 and 2 units of 1.5MW CG170-16K. Selling total 7MW power to National Grid. Signed contract in 2017 and completed commissioning in August 2019. So far, the gensets have been stably running with no any abnormal situation.

Location  
Southeast Asia

Power Rating  
2MW \*2+1.5MW \*2

Time  
Aug, 2019

Fuel  
Natural Gas



POWER STATION

It is used in Power Station, which using 13 units of 2MW CG170-20. Selling total 26MW power to National Grid. Signed contract in 2017 and completed commissioning in January 2021. So far, the gensets have been stably running with no any abnormal situation.

Location  
Middle East

Power Rating  
2MW\*13

Time  
Jan, 2020

Fuel  
Natural Gas

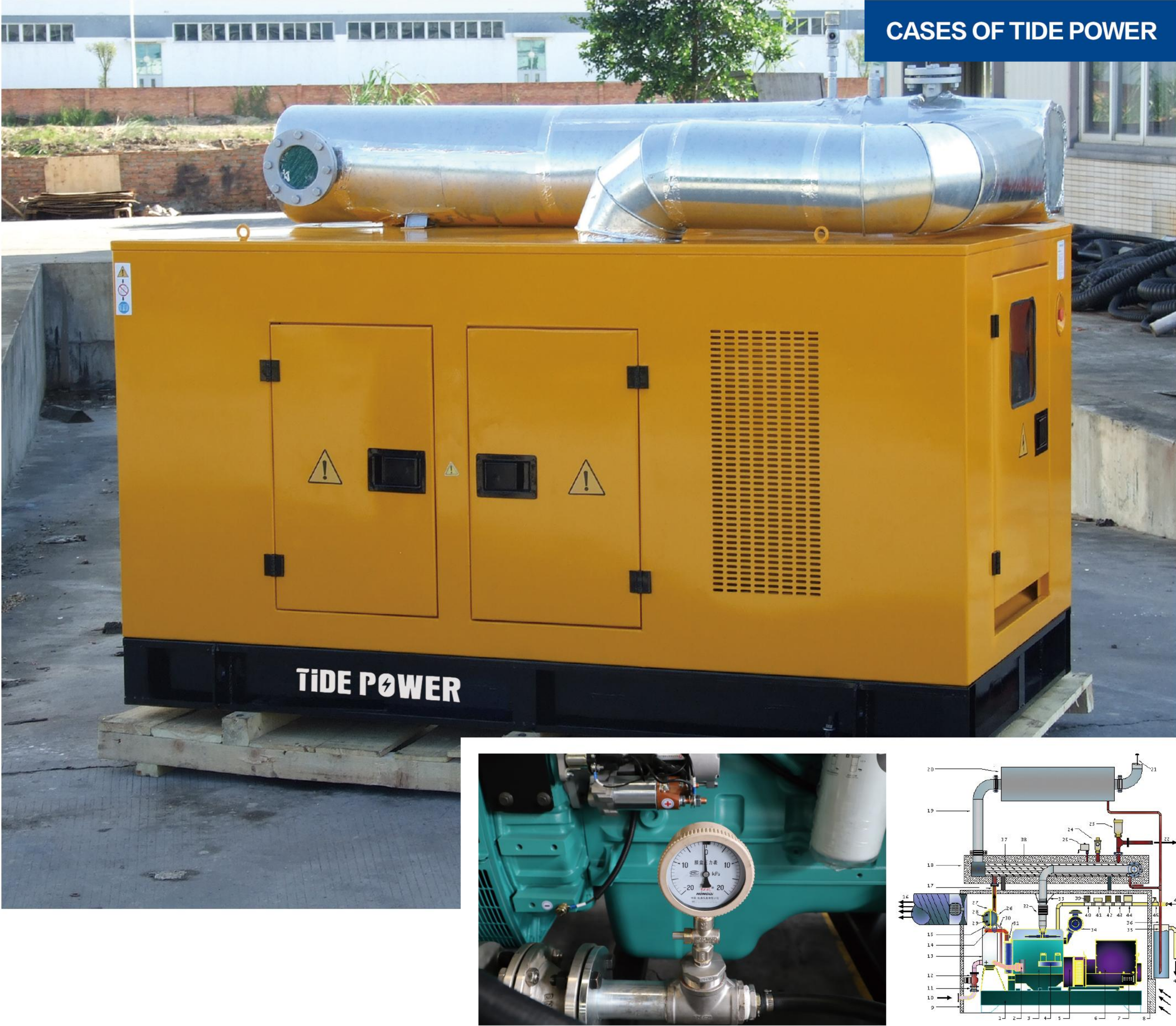
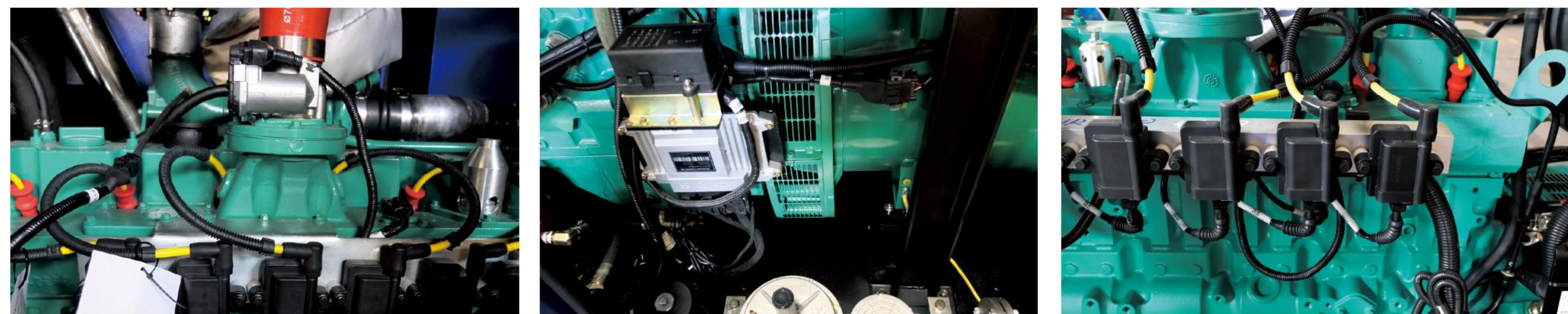


## TIDE POWER GAS GENERATOR WITH CANOPY

For commissioning or maintenance, our professional service engineers are ready to give you the help you need.

The Coal Mine power plant is very cost-efficient since there is no need to transport gas from the gas well in which natural gas supply as on the spot for power generation, and thus minimize overall costs.

Location	Power Rating	Time	Fuel
Indonesia	100kW*2	Nov, 2016	Coal Mine Gas



## COGENERATION OF POWER AND HEAT FROM JACKET WATER

our prime objective is to cooperate with our customers to make success for the projects for a win-win scenario.

One of the key factors of success is continuous service. We aware that our success depends on the success of our customers. Tide Power works closely with our clients at all times. And that years of experienceand excellent service account for such achievement.

Making the best use of the abundant supply of natural gas domestically for power generation, it can save the energy cost and lower CO<sub>2</sub> emissions, which makes contribution to a stable, clean energy supply of the future.

Location
Argentina
Power Rating
80kW*1
Time
June, 2018
Fuel
Natural Gas





FOOD WASTE RECYCLING PROJECT

The construction of the project will help avoid the food safety problem of gutter oil flowing back to the table and eliminate the risk of homo logous pollution and spread of germs caused by kitchen waste as animal feed, which is an important guarantee for sustainable urban development.

Location	Power Rating	Time	Fuel
China	1.5MW *2	March, 2023	Biogas

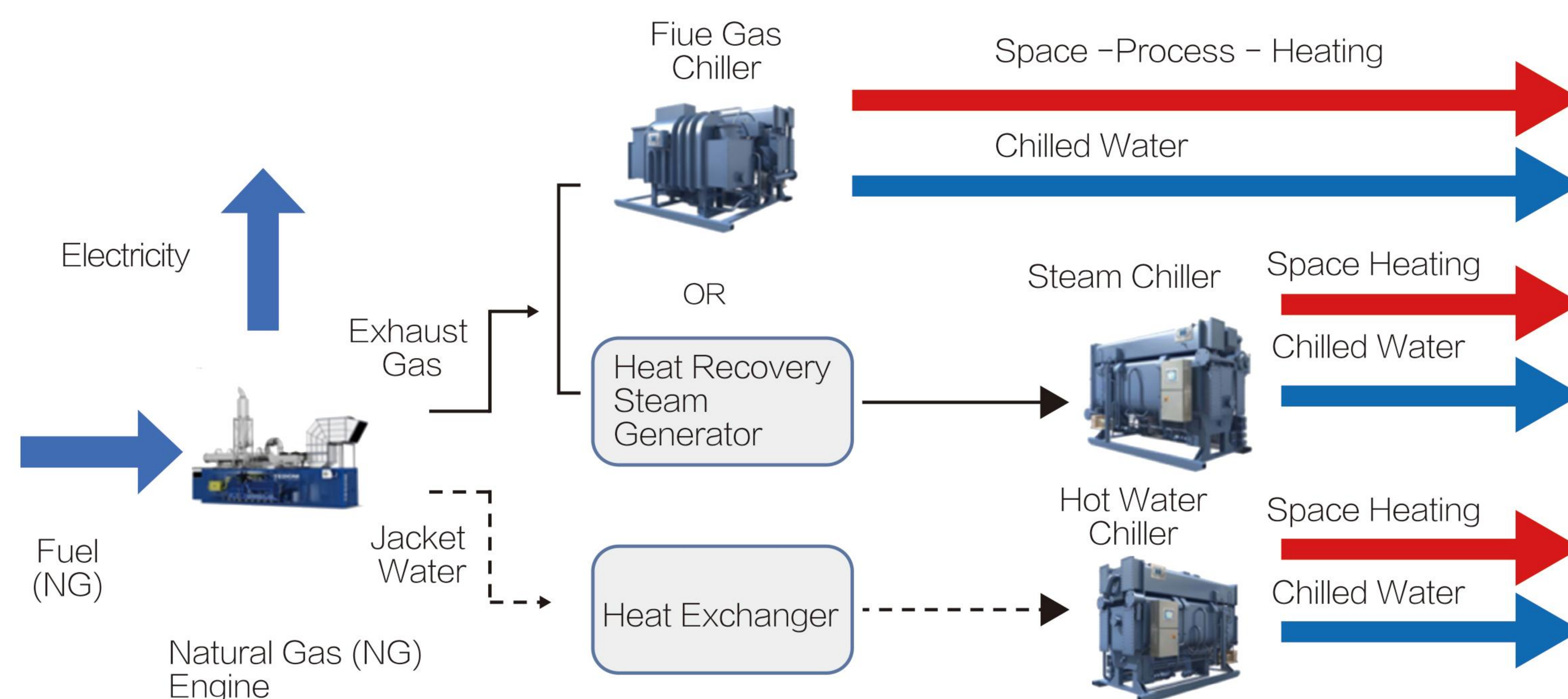
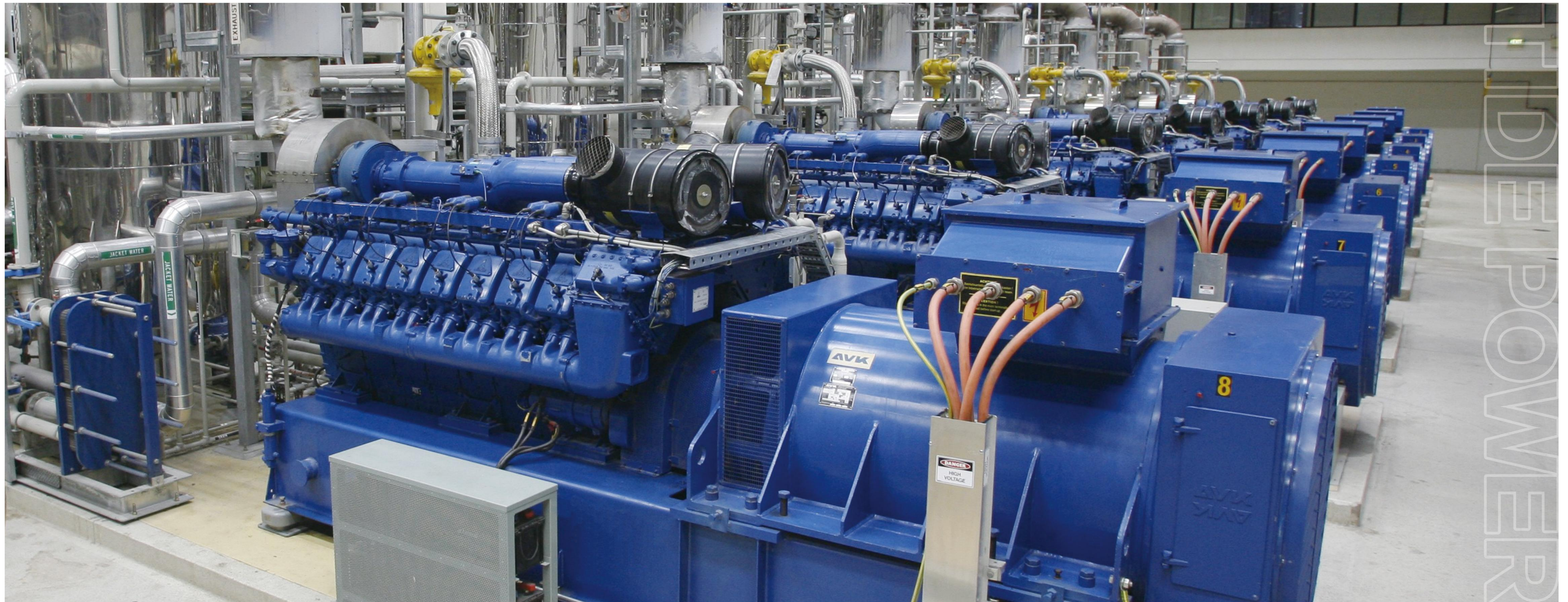


ANIMAL BREEDING PROJECT IN VIETNAM

Four gas generator sets powered by Cummins for biogas power generation at the customer's animal breeding farm in Vietnam, which have been retrofitted with an canopy to provide not only strong power but also low noise and vibration, officially arrived and started working in 2023.

Location	Power Rating	Time	Fuel
Vietnam	180kW*4	January, 2023	Biogas





## TIDE POWER CHP/CCHP TURNKEY SYSTEM

Tide Power provides comprehensive, turnkey CHP/CCHP system management — from sizing, design and installation to ongoing operation and maintenance. Our clients can realize the full benefits of CHP/CCHP simply by letting the experts at Tide Power handle all the details.

Through CHP/CCHP to maximize efficiencies and achieve unprecedented profitability —and we're there with them every step of the way. Not only does Tide Power provide the expertise to help get your CHP/CCHP system up running now, we are committed to support you as your operations grow in the future.