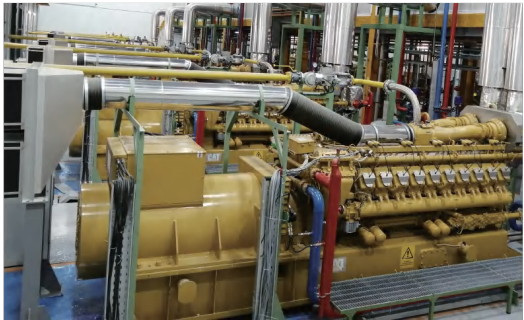




Genset Model	Engine Model	Output Power(kW/kVA) (PRP)		Cylinder	Displacement	Oil consumption (g/kWh)
TLP28G	LP4B27NG1	22	28	4 In-line	2.7	≤0.6
TLP50G	LP4E36NG1	40	50	4 In-line	3.6	≤0.6
TLP90G	LP4E51NG1	72	90	4 In-line	5.1	≤0.6
TLP140G	LP6E77NG1	112	140	6 In-line	10.5	≤0.6
TLP313G	LP6E128NG1	250	313	6 In-line	12.8	≤0.8
TLP438G	LP6E156NG1	350	438	6 In-line	15.6	≤0.4
TLP563G	LP12E238NG1	450	563	12 V-Type	23.8	≤0.8



POWER SOLUTION
FOR YOUR BETTER TOMORROW

Professional Energy Solution Provider

Tide Power Technology was incorporated in Hong Kong in the year 2006 and is focused on providing professional proposals for energy solution approaches. The reliable value added professional services not only capable of allowing easy energy conversion services globally but in having the world to enjoy better livelihood. The prime business of the company is the manufacturing of diesel and gas generators together with the research in the development of green energy. With over 50,000 sq. Meters of factory site and over 300 personnel that locate in China, UK, Saudi Arabia and Nigeria, our production capacity can reach over 10,000 units. Our sales network covers every industry in every corner of the world with offices in Colombia, Russia, Saudi Arabia, Egypt, Vietnam and Myanmar, and the service reaches out to over 80 countries and regions.



DESCRIPTIONS AND SPECIFICATION ARE SUBSTANTIALLY CORRECT AT TIME OF PRINTING AND SUBJECT TO CHANGE WITHOUT NOTICE. (VERSION NO.: V2501)



Natural Gas Power Solution

28-563 kVA

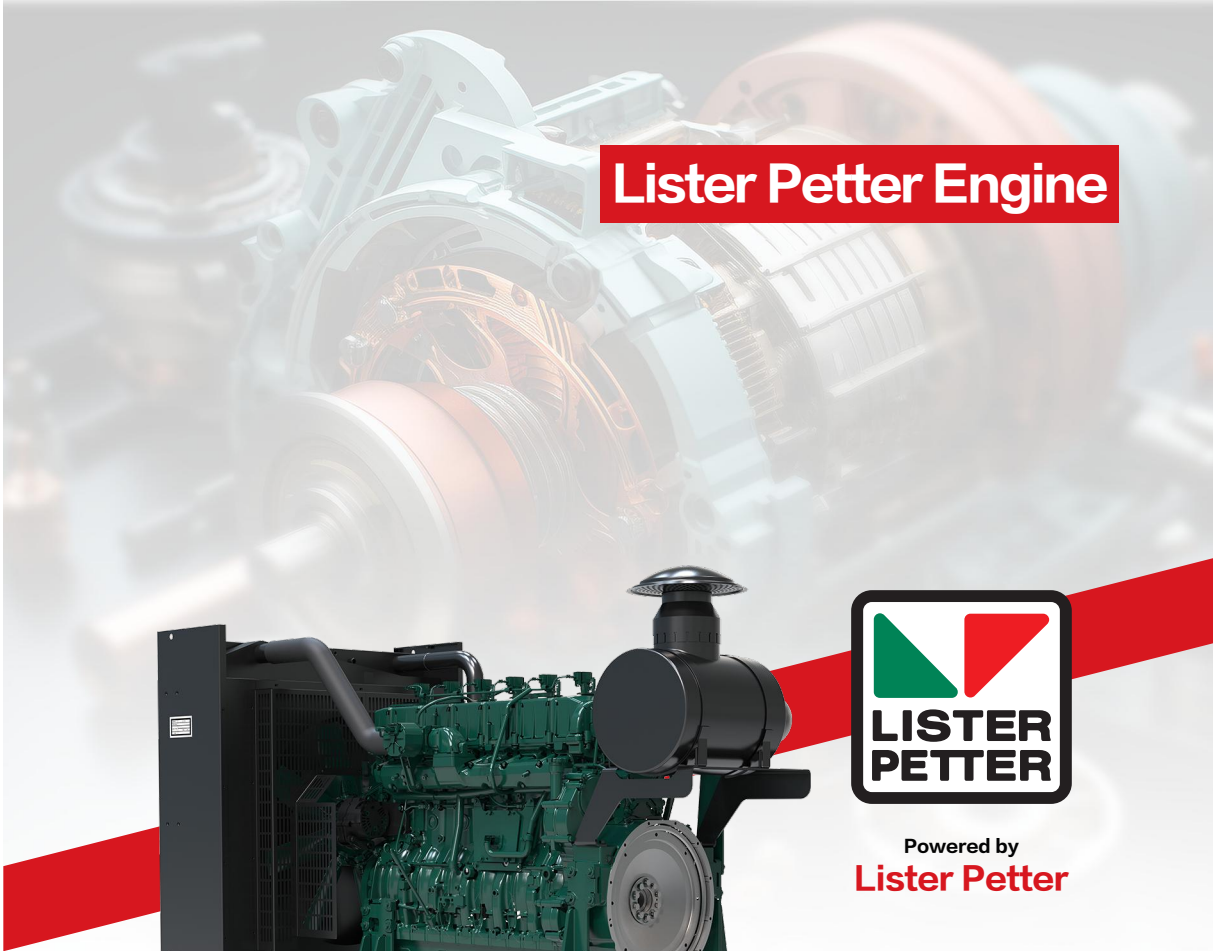


Powered by
Lister Petter

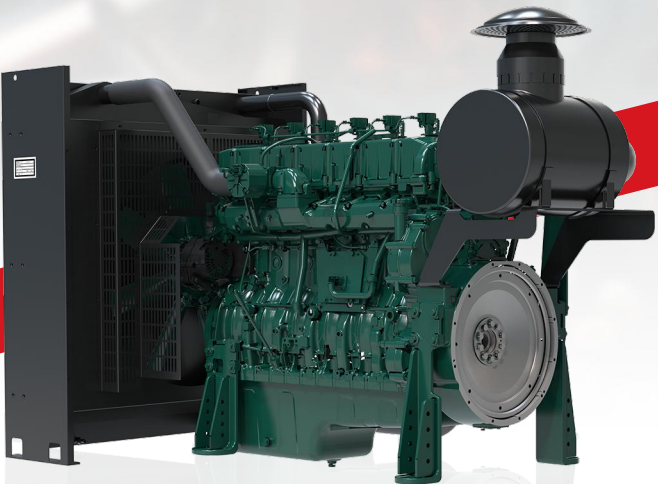
UK / CHINA / SAUDI ARABIA / NIGERIA
TIDE POWER TECHNOLOGY CO., LIMITED

Natural Gas Power Solution

Lister Petter Engine



Powered by
Lister Petter



The ECU ensures optimum engine performance, delivering the power you need with fuel efficiency.

The Venturi mixer is adopted in order to achieve precise air-fuel ratio control.

The high-energy ignition system is characterised by the adjustment of the ignition advance angle according to the intensity of the burst.

The turbocharger is equipped with an exhaust bypass valve in order to meet the demand of intake air volume in different conditions.



Leroy Somer



Deep Sea Controller



ABB Circuit Breakers



Integrated Actuator/Throttle Body

Proven to respond quickly and reliably to engine operation.



Fuel Metering Valve

High-precision gas metering and accurate tuning, increasing the air-fuel ratio and improving engine efficiency.



AIR-TO-AIR INTERCOOLER

Lower intake manifold temperature for higher power.



Leroy Somer Alternator

Reliable, high performance alternators for all requirements.



ECU

Contributes to efficient and reliable engine operation through control of air/fuel ratio, ignition, detonation, etc.



ABB Circuit Breakers

Compact structure, strong breaking capacity.



Gas Train

Convenient design allows you to quickly connect the fuel lines.



Organic Wastewater



Waste Landfill



Agriculture



Animal Husbandry